

# Division of Synthetic Chemistry – Structural Organic Chemistry –

<http://www.scl.kyoto-u.ac.jp/~kouzou/en/index.html>



Prof  
MURATA, Yasujiro  
(D Eng)



Assoc Prof  
WAKAMIYA, Atsushi  
(D Eng)



Assist Prof  
MURATA, Michihisa  
(D Eng)



PD  
ARAMAKI, Yoshitaka  
(D Eng)



PD  
GOPAL, Anesh  
(Ph D)



PD  
AHAREN, Tomoko  
(Ph D)

## Researchers(pt)

HORI, Megumi  
ARAKAWA, Noriko

## Assist Techn Staffs

NAKAIKE, Yumi (D Eng)  
SHIMAZAKI, Ai

## Students

NISHIMURA, Hidetaka (D3)  
CHAOLUMEN (D3)  
FUTAGOISHI, Tsukasa (D2)  
SHIMOGAWA, Hiroyuki (D2)  
ZHANG, Rui (D2)

HASHIKAWA, Yoshifumi (D1)  
MARUYAMA, Naoki (M2)  
KAJI, Shoji (M1)  
OKAZAKI, Shuhei (UG)  
TSUKAO, Masahiro (UG)

## Scope of Research

Fundamental studies are being conducted for the creation of new functional  $\pi$ -systems with novel structures and properties, and for evaluation of their application as organic semi-conducting materials for photovoltaic and electroluminescent devices. The major subjects are: 1) organochemical transformation of fullerenes  $C_{60}$  and  $C_{70}$ , specifically organic synthesis of endohedral fullerenes by the technique of molecular surgery; 2) generation of ionic fullerene species and their application for the synthesis of functional material; 3) synthesis of new carbon-rich materials by the use of transition metal complex; and 4) creation of new functional  $\pi$ -materials with unique photoelectric properties.

### KEYWORDS

$\pi$ -Conjugated Systems  
Functional Materials  
Organic Solar Cells

Endohedral Fullerenes  
Perovskite-Based Solar Cells

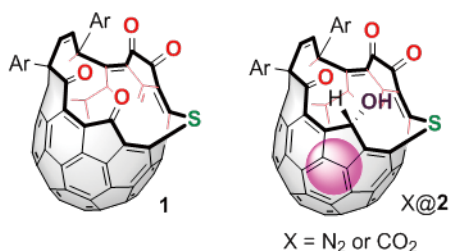


## Selected Publications

Futagoishi, T.; Murata, M.; Wakamiya, A.; Murata, Y., Trapping  $N_2$  and  $CO_2$  on the Sub-Nano Scale in the Confined Internal Spaces of Open-Cage  $C_{60}$  Derivatives: Isolation and Structural Characterization of the Host–Guest Complexes, *Angew. Chem. Int. Ed.*, **54**, 14791-14794 (2015).  
Nishimura, H.; Eliseeva, M. N.; Wakamiya, A.; Scott, L. T., 1,3,5,7-Tetra(Bpin)azulene by Exhaustive Direct Borylation of Azulene and 5,7-Di(Bpin)azulene by Selective Subsequent Deborylation, *Synlett*, **26**, 1578-1580 (2015).  
Wakamiya, A.; Yamaguchi, S., Designs of Functional  $\pi$ -Electron Materials based on the Characteristic Features of Boron, *Bull. Chem. Soc. Jpn.*, **88**, 1357-1377 (2015).  
Wang, S.; Yang, D.-T.; Lu, J.; Shimogawa, H.; Gong, S.; Wang, X.; Mellerup, S. K.; Wakamiya, A.; Chang, Y.-L.; Yang, C.; Lu, Z.-H., In Situ Solid-State Generation of  $(BN)_2$ -Pyrenes and Electroluminescent Devices, *Angew. Chem. Int. Ed.*, **54**, 15074-15078 (2015).  
Chaolumen; Murata, M.; Sugano, Y.; Wakamiya, A.; Murata, Y., Electron Deficient Tetrabenzo-Fused Pyracylene and Conversions into Curved and Planar  $\pi$ -Systems with Distinct Emission Behaviors, *Angew. Chem. Int. Ed.*, **54**, 9308-9312 (2015).

## Trapping N<sub>2</sub> and CO<sub>2</sub> on the Sub-nano Scale in the Confined Internal Spaces of Open-cage C<sub>60</sub> Derivatives: Isolation and Structural Characterization of the Host–Guest Complexes

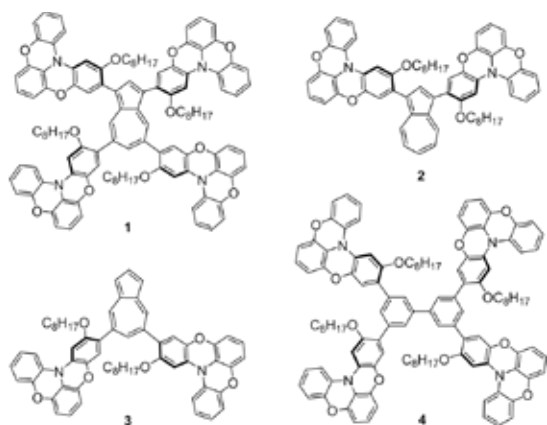
We have previously reported the synthesis of open-cage C<sub>60</sub> **1** with a 17-membered-ring opening and one sulfur atom on the rim. It was found that **1** was able to encapsulate molecular nitrogen and carbon dioxide after its exposure to high pressures of N<sub>2</sub> and CO<sub>2</sub> gas. A subsequent reduction induced a contraction of the opening ( $\rightarrow$ **2**) and trapped the guest molecules inside. The molecular structures of N<sub>2</sub>@**2** and CO<sub>2</sub>@**2** were determined by single-crystal X-ray diffraction analyses, which revealed a short N≡N triple bond for the encapsulated N<sub>2</sub> and a non-symmetric molecular structure for the encapsulated molecule of CO<sub>2</sub>.



**Figure 1.** The structures of open-cage C<sub>60</sub> derivative **1** and host–guest complexes N<sub>2</sub>@**2** and CO<sub>2</sub>@**2**.

## Hole-transporting Materials with a Two-dimensionally Expanded $\pi$ -System around an Azulene Core for Efficient Perovskite Solar Cells

Two-dimensionally expanded  $\pi$ -systems, consisting of partially oxygen-bridged triarylamine skeletons that are connected to an azulene (**1–3**) or biphenyl core (**4**), were

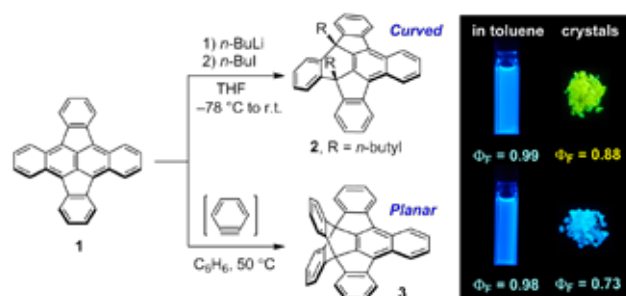


**Figure 2.** The structures of **1–4** with two-dimensionally expanded  $\pi$ -systems.

synthesized. When tetra-substituted azulene **1** was used as a hole-transporting material (HTM) in perovskite solar cells, the observed performance (power conversion efficiency = 16.5%) was found to be superior to that of the current HTM standard Spiro-OMeTAD. Based on a comparison of the optoelectronic and electrochemical properties of **1–4** and Spiro-OMeTAD, we were able to elucidate the factors that are required for HTMs to act efficiently in perovskite solar cells.

## Electron Deficient Tetrabenzo-fused Pyracylene and Conversions into Curved and Planar $\pi$ -Systems with Distinct Emission Behaviors

Polycyclic aromatic compounds containing fully unsaturated five-membered ring(s) have been intensively studied because of their unique properties, which include high electron affinity and reactivity. We demonstrated an efficient route for the synthesis of electron-deficient tetrabenzo-fused pyracylene **1** by using intramolecular oxidative C–H coupling. Compound **1** was shown to possess high electron affinity and to undergo addition reactions with *n*-butyllithium or benzyne. These reactions led to either a 1,4-addition compound **2** or triptycene-type adduct **3** with a curved or planar  $\pi$ -system, respectively. These compounds showed distinct emissions in the solid state with high quantum yields. X-ray diffraction analyses demonstrated that the **2** forms dimers with effective  $\pi$ -overlap, which can cause a significant red-shift in the fluorescence by the stabilization of excimer.



**Figure 3.** Conversions of electron deficient TBP **1** into curved and planar  $\pi$ -systems **2** and **3** having distinct emission behaviors.