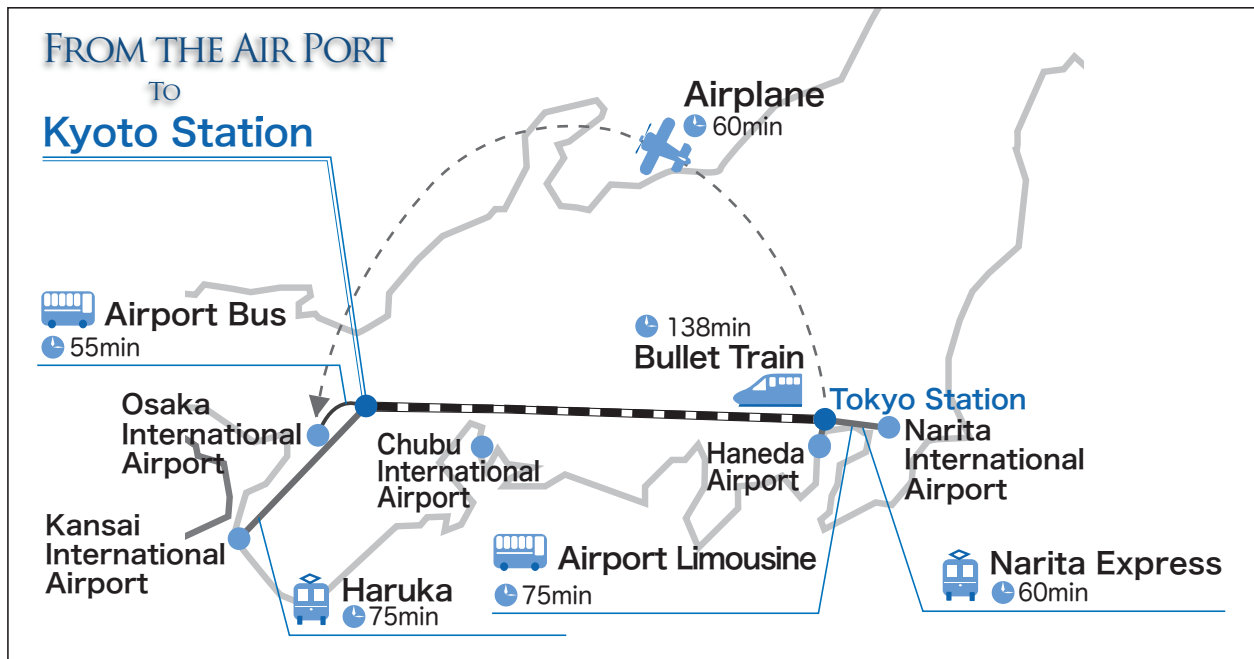



# FROM THE AIR PORT

# TO KYOTO STATION

How To Reach the Institute For Chemical Research, Kyoto University



## FROM Kansai International Airport

 Take the JR Kansai Airport Express “Haruka” Train to **Kyoto Station**.  
🕒 75min

## FROM Narita International Airport

 Take the JR Narita Express Train to Tokyo Station. 🕒 60min

 Take the Airport Limousine to Tokyo Station. 🕒 75min



 Take the JR Bullet Train “Shinkansen” to **Kyoto Station**.  
🕒 138min

or

 Take an Airplane to Osaka International Airport (Itami Airport).  
🕒 75min



 Take the Airport Bus to JR **Kyoto Station**.  
🕒 55min

## FROM Haneda Airport

 Take the Tokyo Monorail & Keikyuu Line to Tokyo Station. 🕒 30min

 Take an Airport Limousine to Tokyo Station. 🕒 40min



 Take the JR Bullet Train “Shinkansen” to **Kyoto Station**.  
🕒 138min